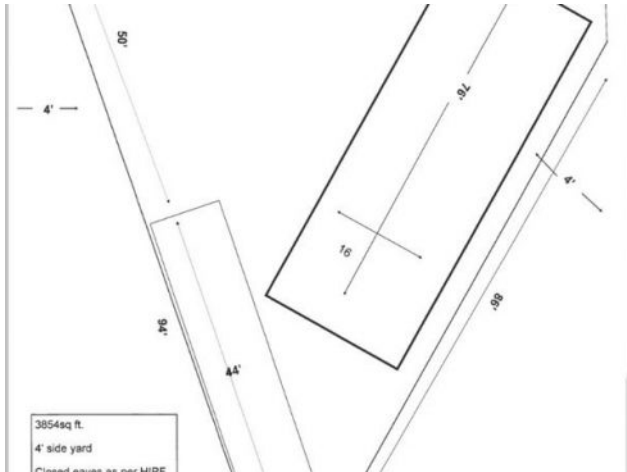




780-380-6207
meghan.robinson@century21.ca

131A, 8010 100 Street
Grande Prairie, Alberta

MLS # A1000869



\$132,500

Division:	MH - Coachman		
Type:	Mobile/House, Manufactured House		
Style:	-		
Size:	1,216 sq.ft.	Age:	2018 (2 yrs old)
Beds:	3	Baths:	2
Garage:	Parking Pad		
Lot Size:	0.00 Acre		
Lot Feat:	Corner Lot, Cul-De-Sac, No Neighbours Behind, Pie Shaped Lot		

Heating:	Natural Gas	Water:	-
Floors:	Carpet, Linoleum	Sewer:	-
Roof:	Asphalt Shingle	Condo Fee:	-
Basement:	-	LLD:	-
Exterior:	-	Zoning:	MHC
Foundation:	Wood	Utilities:	-
Features:	-		

Inclusions: Fridge, Stove, Dishwasher, Microwave

Brand new show home with a modern grey and white color scheme throughout. Spacious entryway opening up to the kitchen, living and dining area. Here you will have plenty of room for furniture. Stainless steel appliances, bright white cupboards and an island with sink and eat up nook. Two well sized bedrooms at the front end of the home along with the main bathroom. Master bedroom at the rear shows off a walk in closet and 4 piece en suite you can relax and enjoy warm baths in the deep, round tub. This home has such a cozy home feeling with a central location near shopping, groceries and more. It also sits tucked away on one of the biggest lots in Coachman Village with no neighbors behind. This home comes complete with shed and deck. Land lease is \$530/month and includes garbage/snow removal and common area maintenance. Buyer incentive offering 3 months free land lease.